

University of Arkansas, Fayetteville

ScholarWorks@UARK

Student Newsletter, University of Arkansas First
Year Experience

Student Affairs

1-2012

Student Newsletter, January 2012

University of Arkansas, Fayetteville

Follow this and additional works at: <https://scholarworks.uark.edu/student-newsletter>

Citation

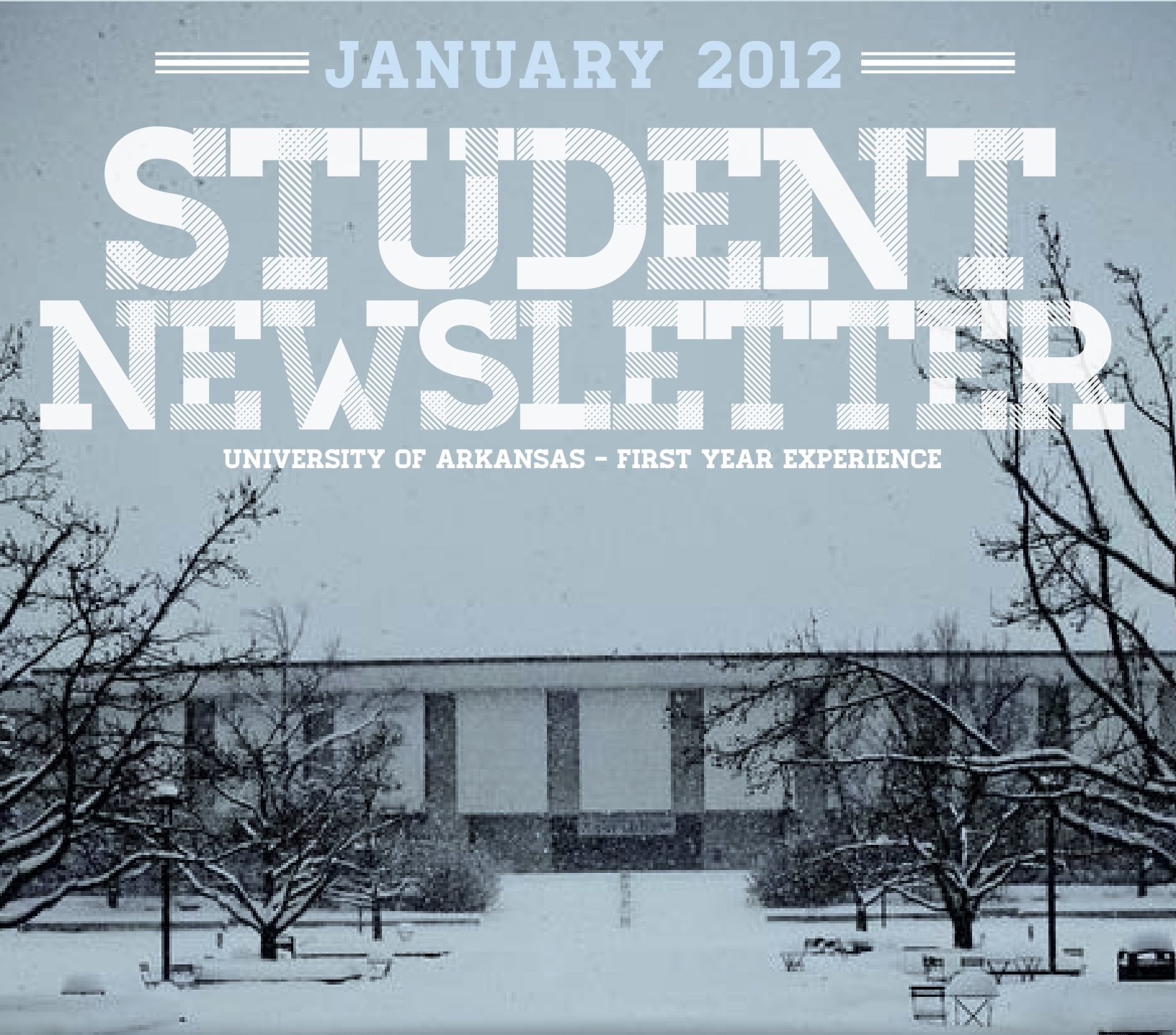
University of Arkansas, Fayetteville. (2012). Student Newsletter, January 2012. *Student Newsletter, University of Arkansas First Year Experience*. Retrieved from <https://scholarworks.uark.edu/student-newsletter/5>

This Periodical is brought to you for free and open access by the Student Affairs at ScholarWorks@UARK. It has been accepted for inclusion in Student Newsletter, University of Arkansas First Year Experience by an authorized administrator of ScholarWorks@UARK. For more information, please contact scholar@uark.edu.

== JANUARY 2012 ==

STUDENT NEWSLETTER

UNIVERSITY OF ARKANSAS - FIRST YEAR EXPERIENCE



In this issue:

JANUARY EVENTS CALENDARS

WELCOME BACK

WINTER PREPAREDNESS

TIME MANAGEMENT

VOLUNTEER OPPORTUNITIES

QON REVOLUTION

JANUARY 2012

on the academic calendar:

| DATE | EVENT |
|------|--|
| 1/19 | Last day to add a 1st 8-week class and last day for 100% refund for dropping a 1st 8-week class |
| 1/23 | Last day of Spring 2012 Fee Payment Deadline Last day to: Register for Spring 2012 Add a full semester class Apply for Residency reclassification for Spring 2012 Change from Audit to Credit Drop a 1st 8-week class without a mark of "W" Have college-based fees adjusted by changing colleges Receive a 100% cancellation of fees for dropping a full term class |
| 1/27 | Last day to receive 90% fee refund for an official withdrawal, charged \$45.00 withdrawal fee |
| 1/28 | First day to receive 80% cancellation of fees for officially withdrawing from all classes |
| 1/30 | Last day to change from Credit to Audit Last day to drop a full semester class without having the mark of "W" shown on the official record |

on the sports calendar:

WOMEN'S BASKETBALL

| DATE | EVENT |
|------|---|
| 1/12 | Ole Miss Oxford, Miss. @ 7 p.m. |
| 1/15 | Auburn FAYETTEVILLE @ 1:30 p.m. |
| 1/19 | Vanderbilt FAYETTEVILLE @ 7 p.m. |
| 1/22 | LSU Baton Rouge, La. @ 2:30 p.m. |
| 1/26 | Mississippi State Starkville, Miss. @ 7 p.m. |
| 1/29 | Florida FAYETTEVILLE @ 2 p.m. |

MEN'S BASKETBALL

| DATE | EVENT |
|------|--|
| 1/11 | Ole Miss Oxford, Miss. @ 7 p.m. |
| 1/14 | LSU FAYETTEVILLE @ 8 p.m. |
| 1/17 | Kentucky Lexington, Ky. @ 8 p.m. |
| 1/21 | Michigan FAYETTEVILLE @ 1 p.m. |
| 1/25 | Auburn FAYETTEVILLE @ 8 p.m. |
| 1/28 | Alabama Tuscaloosa, Ala. @ 12:30 p.m. |
| 1/31 | Vanderbilt FAYETTEVILLE @ 8 p.m. |

WOMEN'S TENNIS

| DATE | EVENT |
|------|---------------------------------------|
| 1/20 | Louisville FAYETTEVILLE 12 p.m. |
| 1/3 | North Texas FAYETTEVILLE 12 p.m. |
| 1/4 | Oklahoma State FAYETTEVILLE 2 p.m. |
| 1/5 | Kansas State FAYETTEVILLE 12 p.m. |

MEN'S TENNIS

| DATE | EVENT |
|------|--|
| 1/28 | Oral Roberts FAYETTEVILLE @ 5 p.m. |
| 1/29 | UT-Arlington FAYETTEVILLE @ 12 p.m. |

SWIMMING

| DATE | EVENT |
|------|---|
| 1/14 | Penn St./Navy Happy Valley, Penn. @ 10 a.m. |
| 1/21 | Kansas FAYETTEVILLE @ 9 a.m. |

GYMNASTICS

| DATE | EVENT |
|------|---------------------------------------|
| 1/13 | Kentucky FAYETTEVILLE @ 7 p.m. |
| 1/20 | LSU FAYETTEVILLE @ 7 p.m. |
| 1/26 | Florida Gainesville, Fla. @ 6 p.m. |

WELCOME BACK!

Spring 2012 Welcome Weeks

Looking for fun things to do at the beginning of the semester? Below you will find a link to the Spring 2012 Welcome Weeks Calendar containing many fun and exciting events for you to attend. For more information, please contact First Year Experience Programs at **575-5002**.

Click here to download the Welcome Weeks Calendar

Resident Assistant Applications

University Housing is now accepting applications for Resident Assistants. This is a unique position that will challenge, inspire, and motivate you. It also provides financial support for the present and valuable skills and work experience for the future. Applications have been live since November 1st and are due on January 19th, so there is still plenty of time for you to submit yours. The forms and additional information can be found at the [University Housing website](#). Please be sure to READ ALL of the information included on this web site and if you have additional questions, please contact the RA Selection Committee at **housing@uark.edu** or **(479)575-3951**.

Scholarship Applications

If you have plans to seek or renew any loans or scholarships for next year, remember that application deadlines are often in the spring. To be eligible for work-study and other federal funds, you need to complete a FAFSA. For a list of financial aid sites, **click here**.



For any questions regarding scholarship opportunities or renewals, please contact the Office of Financial Aid at the corner of Maple and Garland:

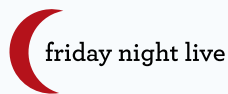
114 Silas Hunt Hall Fayetteville AR, 72701

Phone (479) 575-3806 / Fax (479) 575-7790

R.O.C.K. Camp & R.O.C.K. Camp Adventure Mentor Applications

First Year Experience is now accepting applications for R.O.C.K. Camp 2012 Mentors and R.O.C.K. Camp Adventure 2012 Mentors. These are great leadership opportunities and on-campus job opportunities. Help us welcome incoming students and show them what it means to be a True Arkansas Razorback! There will be four training sessions on Thursday evenings and two weekend workshops throughout the spring semester. All of the specific dates and time requirements are listed on the applications. There will also be two informational sessions on **Wed. Jan. 25th and Thurs. Jan. 26th @ 5:30 in Arkansas Union Room 512**, if you want to learn more about what it means to be a R.O.C.K. Camp Mentor and R.O.C.K. Camp Adventure! Applications are available @ <http://fye.uark.edu> and are due to First Year Experience (Arkansas Union A688) by Friday, Feb. 3rd.

Friday Night Live Job Opportunity



Friday Night Live is excited to announce that we are looking to hire 2 new Student Coordinators

to assist us with our programs for this academic year. Below, you will find the job description and application in a link on Digital Dropbox. These applications will be due to the First Year Experience Office in ARKU A688 by 5:00 PM on Friday, January 20, 2012. We look forward to adding new and exciting members to our team.

[Click here to download the application](#)

**DETAILS @
SERVICE LINES
& DISH RETURN**

Help leave less behind & enter to win a Kindle Touch 3G

DINNER MEAL REGISTRATION
FEB 2012
Brough • NW Quad • Pomfret


**PROJECT
CLEAN PLATE**
LEAVE LESS BEHIND



SPONSORED BY:
The Campus Office for Sustainability & Chartwells

R.O.C.K. CAMP R.O.C.K. CAMP ADVENTURE MENTOR RECRUITMENT 2012



APPLY HERE

WINTERREADY

During the winter months, Fayetteville, Arkansas can get a bit chilly. In the event severe weather occurs, the University of Arkansas has established an Inclement Weather Policy. When inclement weather happens, the University recognizes the need to address how such conditions may affect the overall operations of the institution. In general, the University of Arkansas Police Department and Razorback Transit authorities check road conditions in the early morning hours when inclement weather is expected. Conditions are reported to university administrators who discuss whether the university should delay opening or cancel classes and close business operations.

When inclement weather occurs, information is sent out through our emergency notification system, RazAlert.

They make this determination based on the following four criteria:

- Designated university transit bus routes are open to travel
- Major commuter parking lots are accessible
- Interstate 540 from County Line Road in Springdale to West Fork city limits is open for travel
- Conditions appear to be such as to allow students, faculty and staff to reach campus

Generally, there are three possible responses to incidents of inclement weather:

- Delayed opening. During a delayed opening, University officials will publicly announce the specific time at which the University will open.
- Early Dismissal. In the event of an early dismissal, the University will cease all academic classes and regular business operations at a publicly announced time.
- Closure of offices and business operations. In the event of a closure, all day and evening classes will be cancelled. All offices and regular business operations will be closed as well.

When inclement weather (or another University-wide happening) occurs, information is sent out through our emergency notification system, RazAlert. Students, faculty and staff members are all automatically enrolled in the RazAlert system. While parents and family members are not automatically enrolled, you can add additional phone numbers (up to six total) through your ISIS account. However, it is strongly recommended that you keep your phone numbers as the primary contact on your account. For more information about RazAlert, visit razalert.uark.edu.

TIMEMANAGEMENT

With the start of a new semester, you may be trying to turn over a new leaf and manage your time more effectively. Or maybe your New Year's resolution was to procrastinate less or accomplish a large task. Whatever the reason, we have some helpful tips that may prove beneficial when it comes to managing time and getting things done! Take some time and go through these tips:

Utilize calendars and/or planners.

This is the first step to physically managing your time. By using these items, you can effectively plan how you spend your time and have a visual of important dates, events and holidays to keep you on track.

Make a To-Do List. To-do lists can be helpful because they let you see everything that is needed to be completed. With the help of a to-do list, when you have a few moments to spare, you can look at your list and see what item fits best within the time you have available and not waste time trying to remember what all you have to do in the first place.

Prioritize. Once you have a working to do list, assign each of your tasks into one of three categories: Must Do, Should Do, and Nice To Do. Devote most of your time to the tasks in the "Must Do" category. Ask yourself, "What is the best use of my time right now?" By asking and answering this question, you should be able to prioritize tasks more appropriately.

Create time management goals. Setting goals will help hold you accountable to yourself and your to-do list. Estimate the time it will take for you to finish a task or assignment and use that as motivation. Keep in mind, it's important to set goals that are realistic and achievable and always take into account the quality of your work.

Finish your To-Do List. It's easy to make one, but not so easy to complete, especially when the tasks on your lists are somewhat undesirable. For those big tasks that are bogging you down, take the first 10 minutes of your day and work on them. It may take a few days to complete, but you won't be maxed out by the end of it as you would if you did it in one sitting.

Plan Ahead. When you know of an assignment, project or meeting coming up, make sure to mark out time in your day (via your planner) to work on the task. If you think you might need help on the assignment, whether it be tutoring or someone to bounce ideas off, plan that out in advance so you're able to stay on track.

January VOLUNTEERGUIDE

VOLUNTEER.UARK.EDU

Below are some volunteer opportunities in January:

Alternative Spring Break Applications are now available!

There are three trips this year for Alternative Spring Break

Southwest AR - Departing March 19, returning March 26. The Southwest Arkansas trip will be focused around the Texarkana/Hope area. This part of our great state gave us Silas Hunt, the first African-American student admitted to the U of A in the 20th century. You will work with community groups and visit area youth.

Arkansas Delta ~ Departing March 21, returning March 26. This is a technology themed Alternative Spring Break where students will partner with agencies and community members in Helena/West Helena and offer technology related services ranging from text message training workshops for seniors to computer building workshops with high school seniors. No computer skills are necessary to participate.

Northeast Oklahoma - Departing March 19, returning March 26. This trip will introduce students to the Native American culture in Oklahoma through participation in service and education.

Please go to <http://leadership.uark.edu> for the application and additional information under the service tab. Applications are due January 29th by 5:00 pm to the Campus Life Center ARKU A665.

[Click here to download the application](#)

Project Clean Plate Volunteers

FEB 6th - FEB 8th

The Office for Campus Sustainability is collaborating with Chartwells for the Project Clean Plate event. This is a food waste awareness campaign that includes a Kindle give-away held in February.

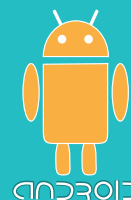
The OCS is looking for volunteers help with this campaign. A volunteer training meeting will be held on February 1st at 5:30 with food and drinks. You will receive a gift bag filled with coupons and a t-shirt, plus a free meal at the dining hall you are volunteering!

All volunteers will need to attend a training meeting on February 1st at 5:30. The training will take less than 15 minutes, so stop by. Just contact us if you are not available at that time.

DOWN LOAD THE APP

Get Deals on Food in Campus Locations

QPON **REVOLUTION**.COM



UNIVERSITY OF ARKANSAS - FIRST YEAR EXPERIENCE